

# How to install UWriter USB Driver

- Regular method

Step 1: Install the UWriter software installer first.

Step 2: After software is installed, connect UWTR hardware to USB port.

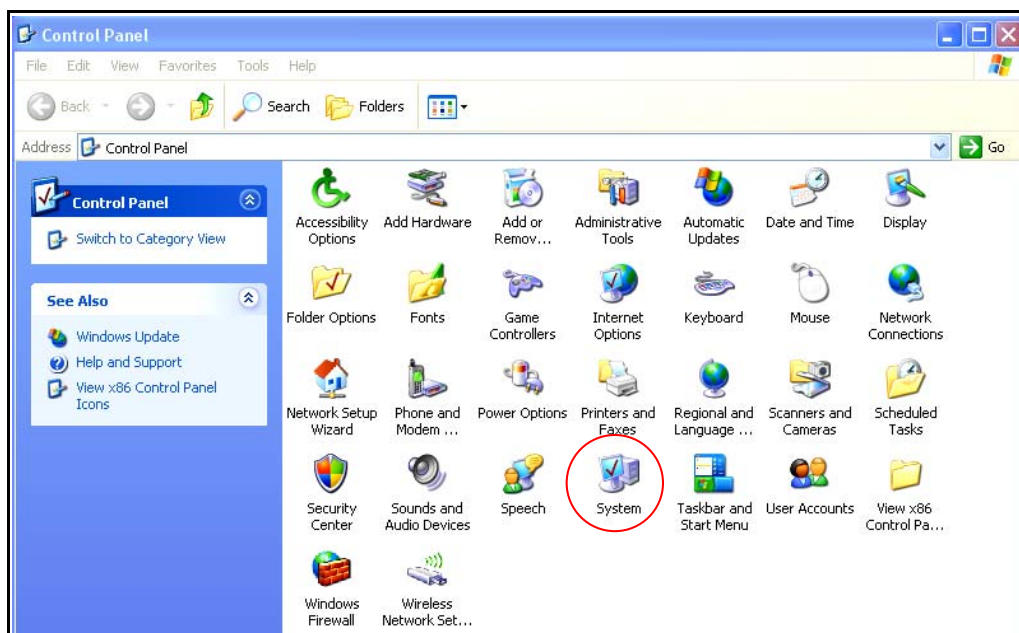
Note: If you connect UWTR hardware before installing UWriter intaller, the UWriter IDE cannot find UWTR. Refer below for the correct steps to prevent disconnection problem.

- For Windows 2000/XP

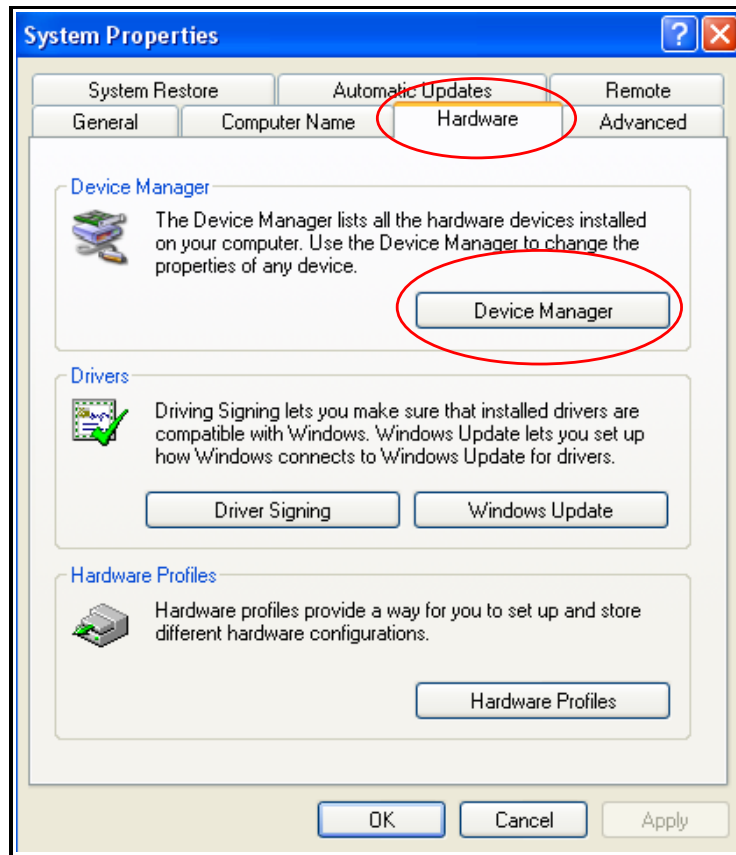
**Step 1:** Install UWriter installer.

**Step 2:** Connect UWTR to host PC USB port.

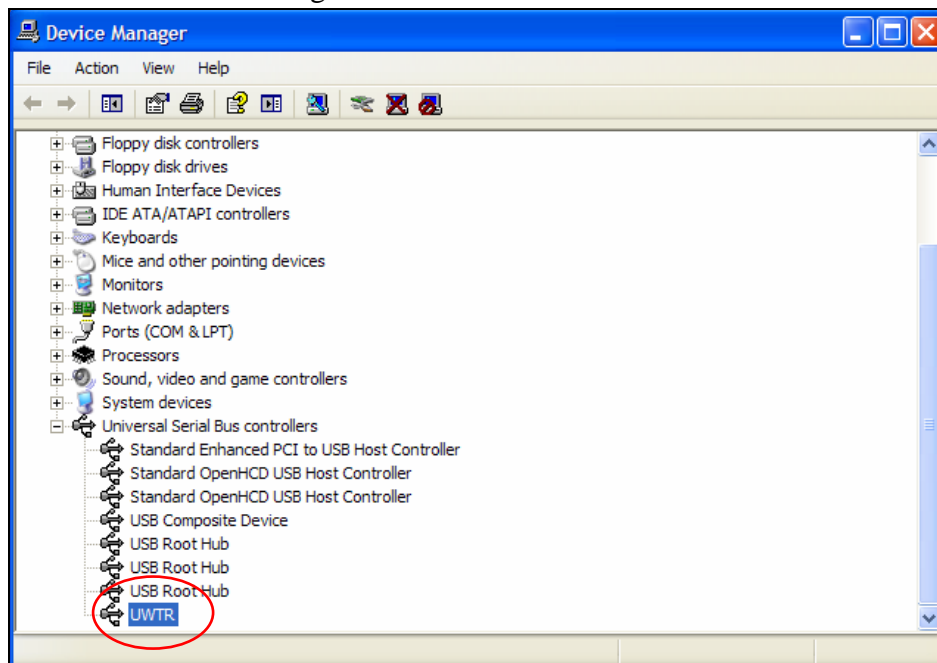
**Step 3:** Open **Control Panel** and look for the **System** icon



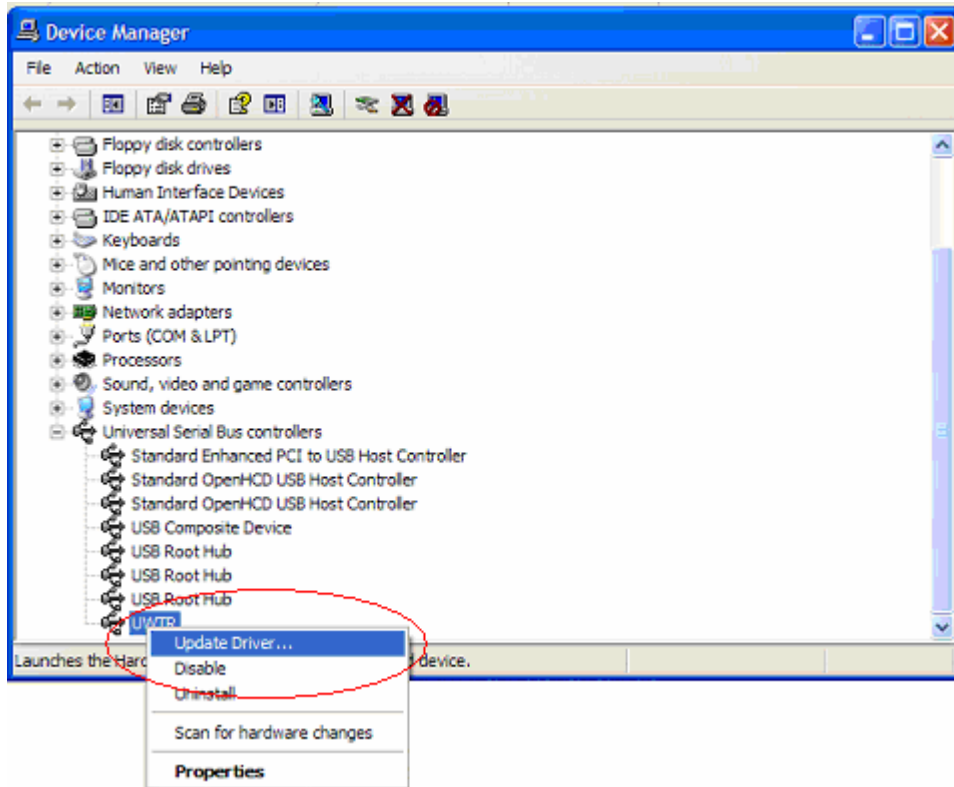
**Step 4:** From the **System Properties** dialog, select **Hardware** tab and click **Device Manager** button.



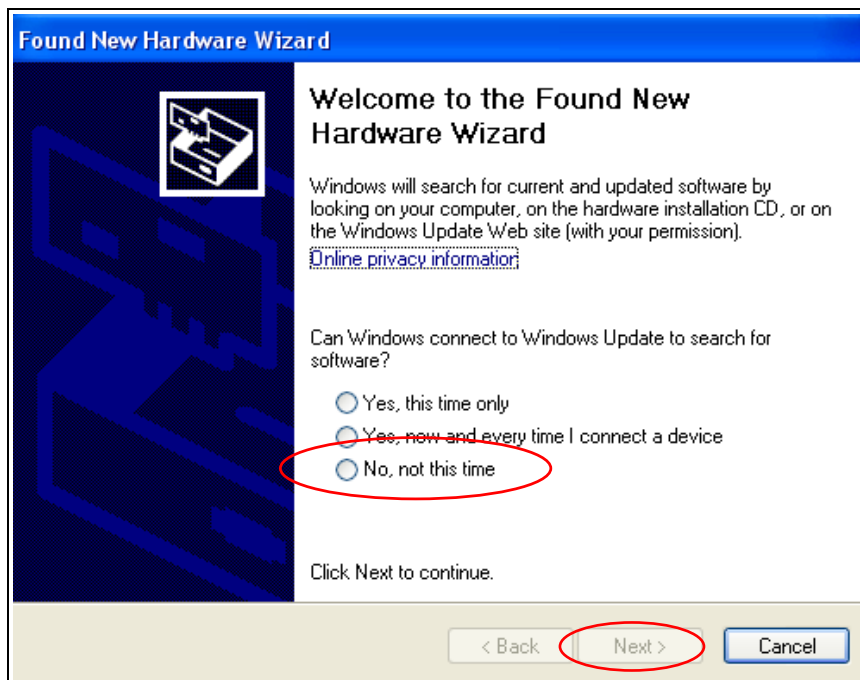
**Step 5:** From the **Device Manager** dialog, search for **Universal Serial Bus controllers** device node. Select and right-click on **UWTR** label.



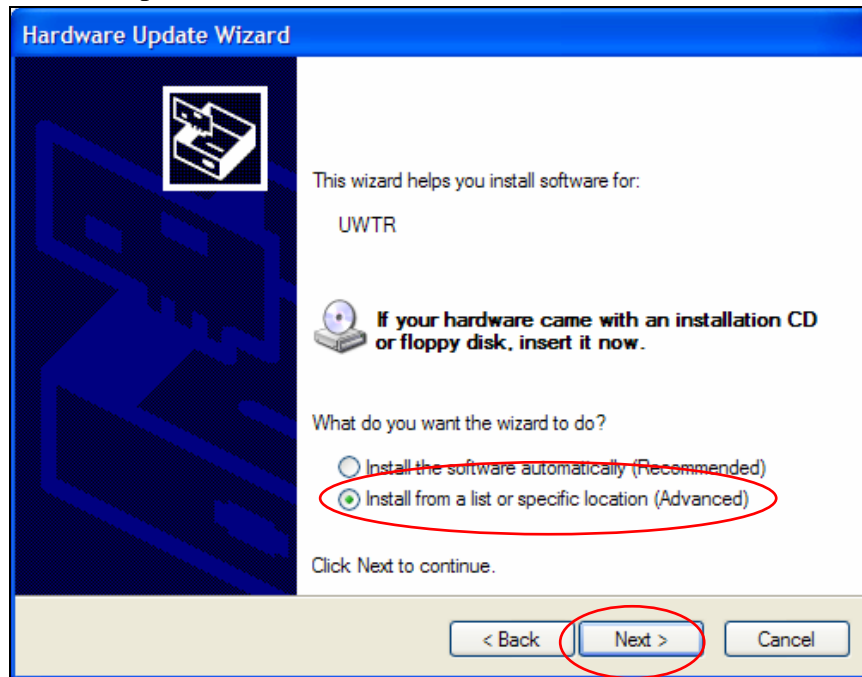
**Step 6:** From the resulting submenu, click the **Update Driver...** command to update the existing old device driver.



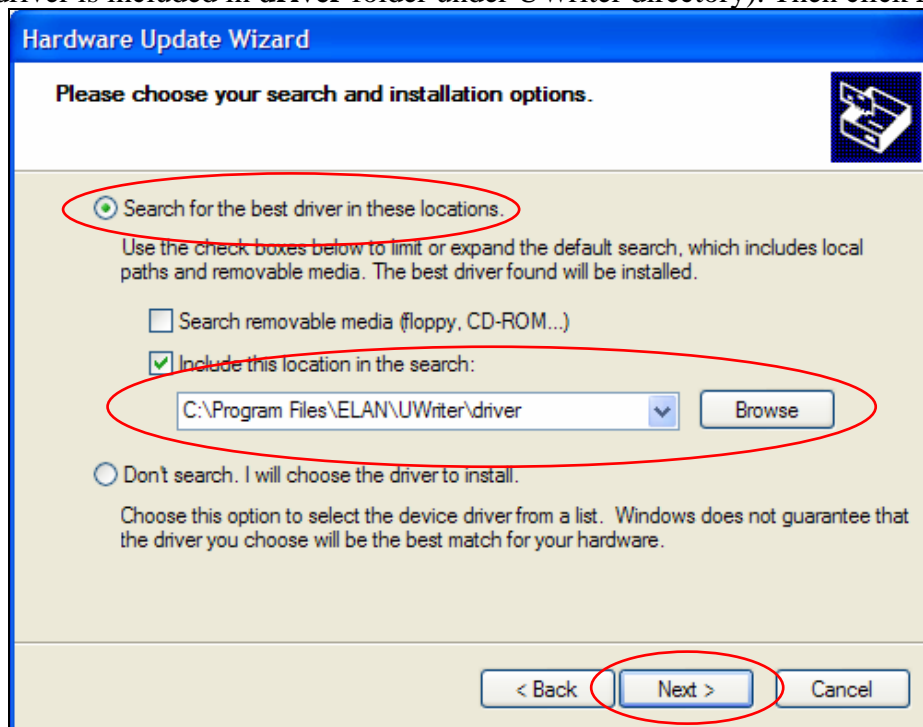
**Step 7:** From the dialog, select the “**No, not this time**” option button first, and then click the **Next** button



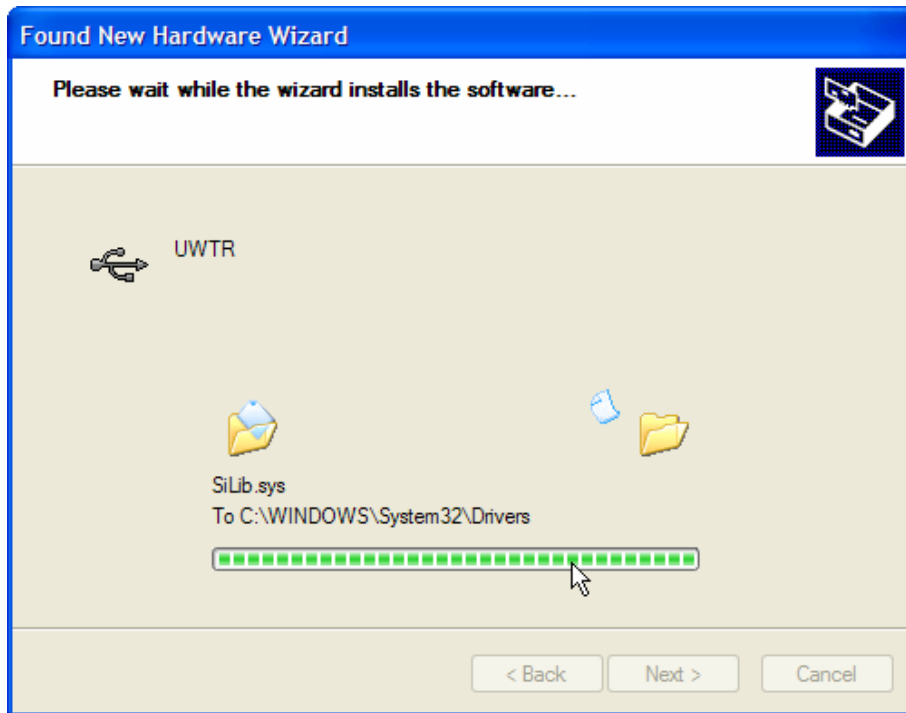
**Step 8:** From the next display, select the “**Install from a list or specific location (Advanced)**” option button and click **Next** button.



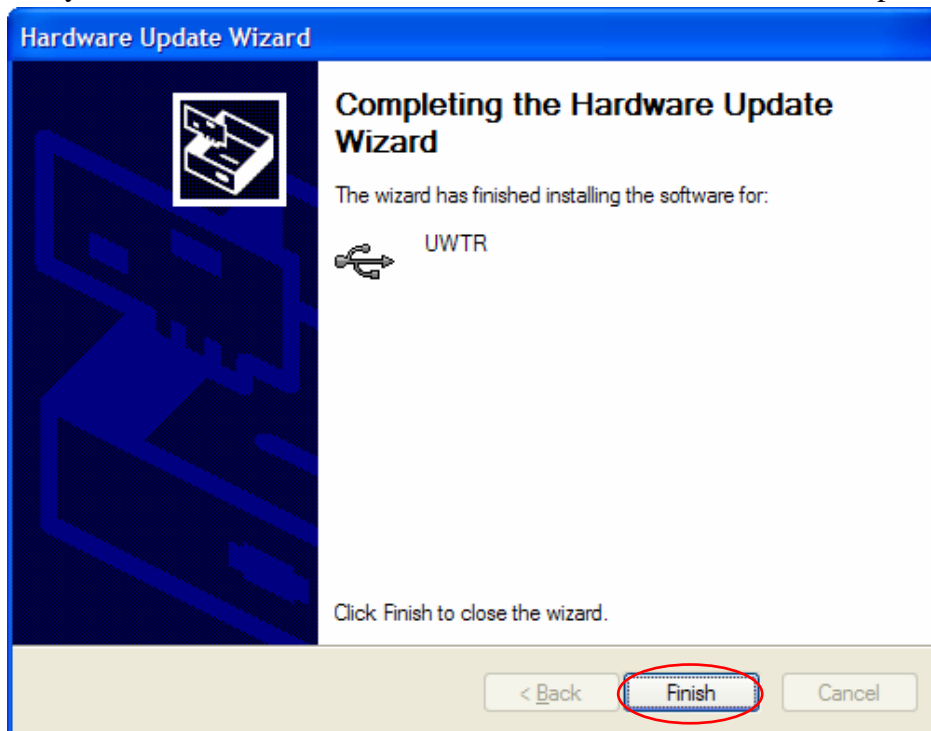
**Step 9:** From the subsequent dialog display, select the “**Search for the best driver in these locations**” option button and the “**Include this location in the search**” checkbox. Then click **Browse** button to browse for the new driver folder location (NOTE: The driver is included in **driver** folder under UWriter directory). Then click **Next** button



**Step 10:** After clicking **driver** folder, the **Found New Hardware Wizard** dialog displays, then check whether the device name is “UWTR” or not.



**Step 11:** Finally, click **Finish** button to conclude the device driver installation process.



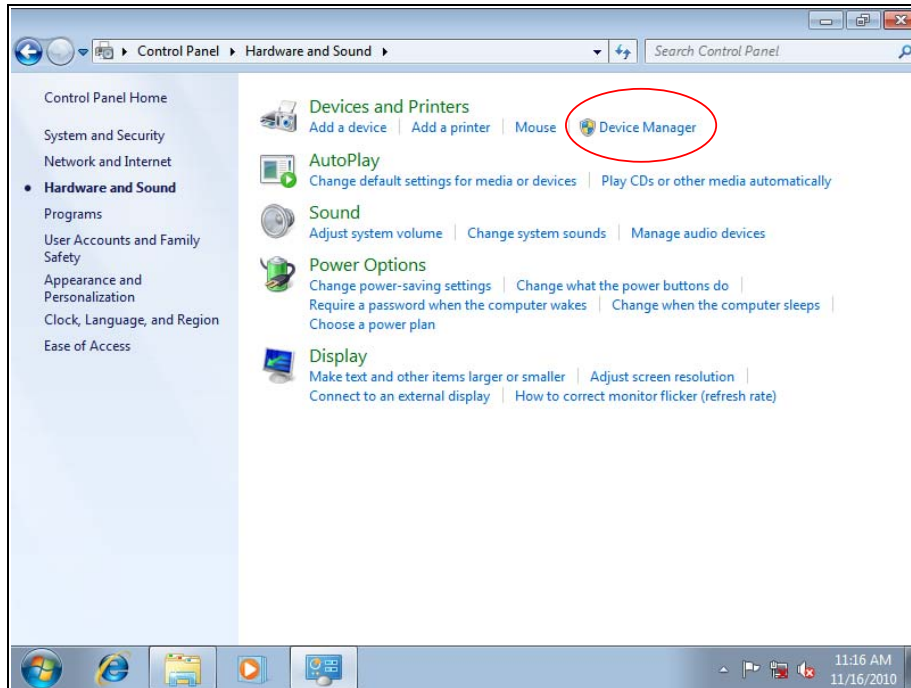
**Step 12:** After the “UWTR” driver is installed successfully, you can now start using UWriter.

## For Windows Vista/Win 7

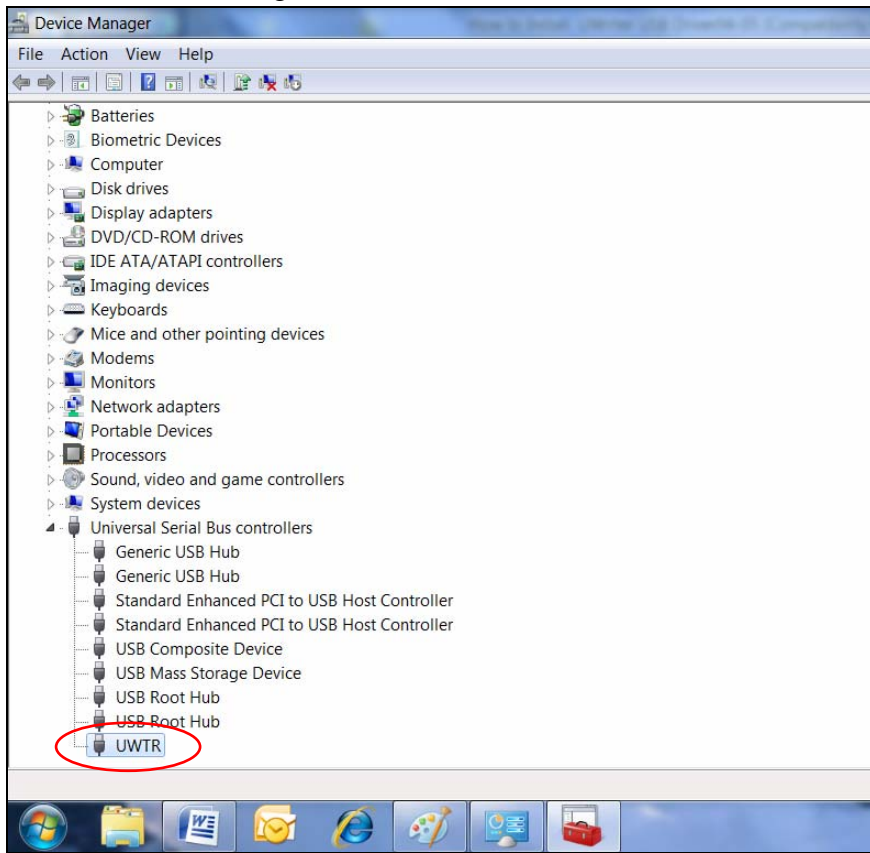
**Step 1:** Install UWriter installer.

**Step 2:** Connect UWTR to host PC USB port.

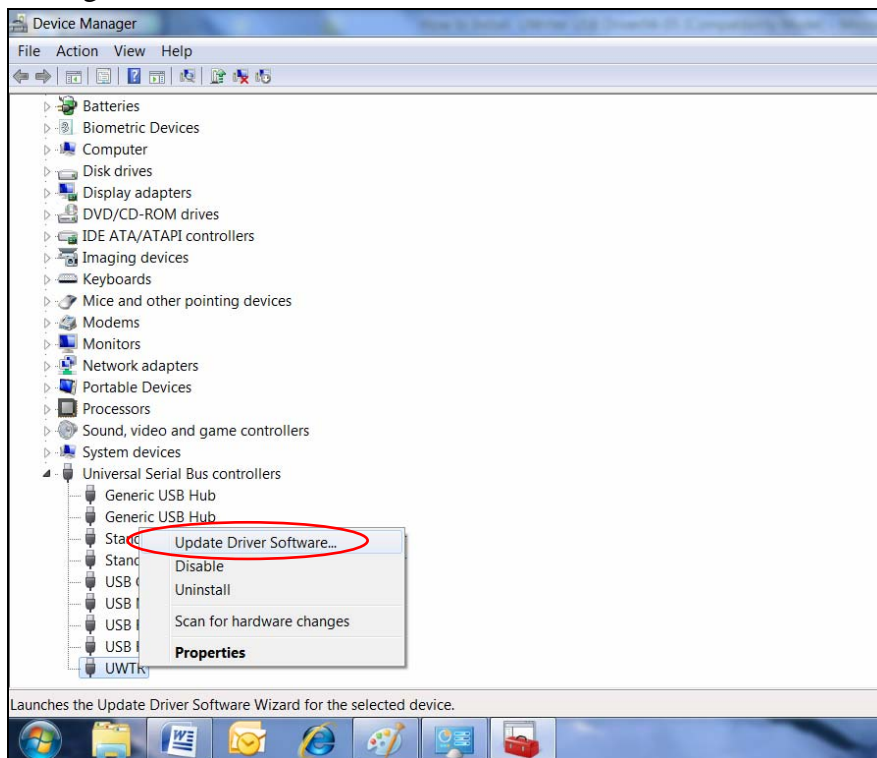
**Step 3:** Open **Control Panel** and look for the **Device Manager** icon



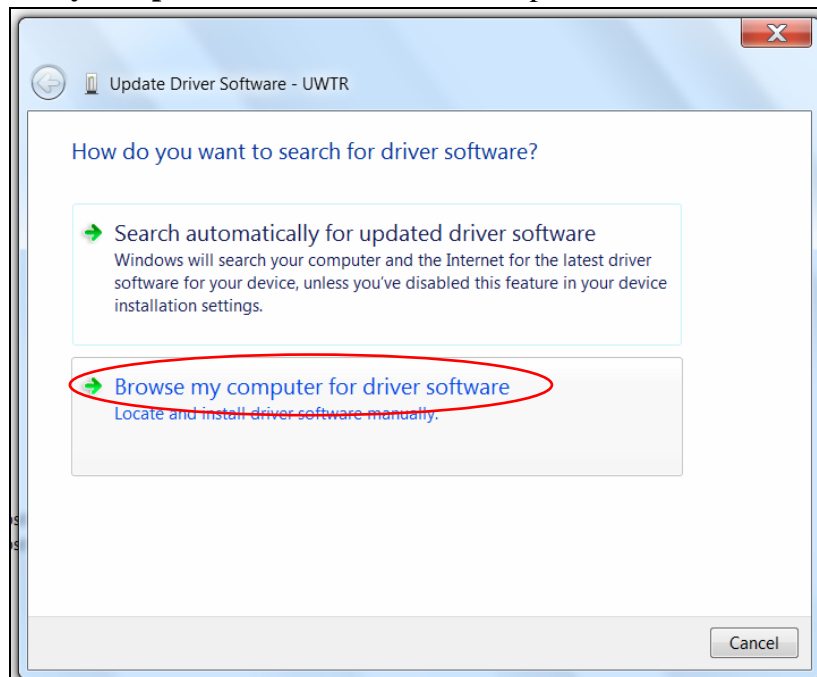
**Step 4:** From the **Device Manager** dialog, search for **Universal Serial Bus controllers** device node. Select and right-click on **UWTR** label



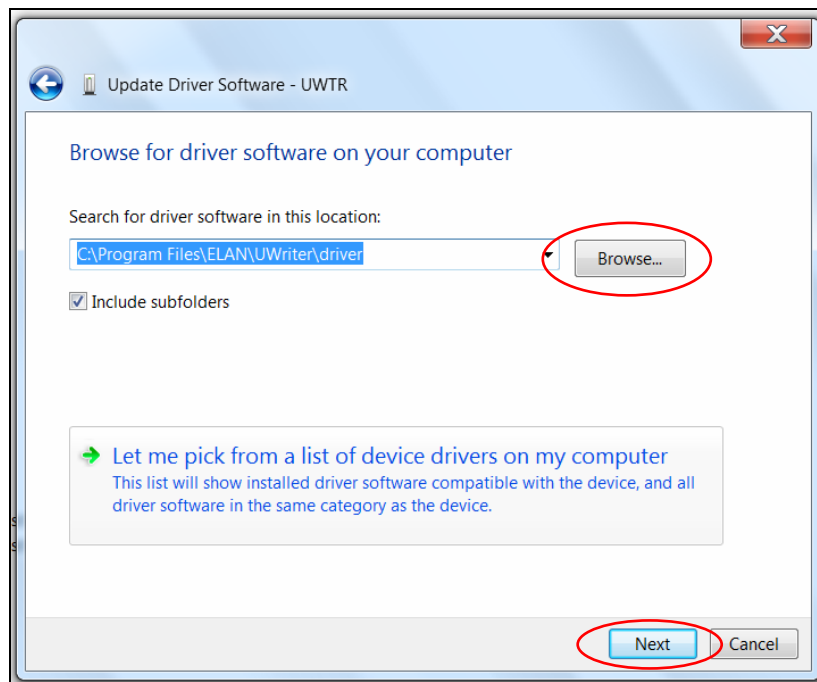
**Step 5:** From the resulting submenu, click **Update Driver Software...** command to update the existing old device driver.



**Step 6:** From the next **Update Driver Software** dialog that displays, select and click “**Browse my computer for driver software**” option.

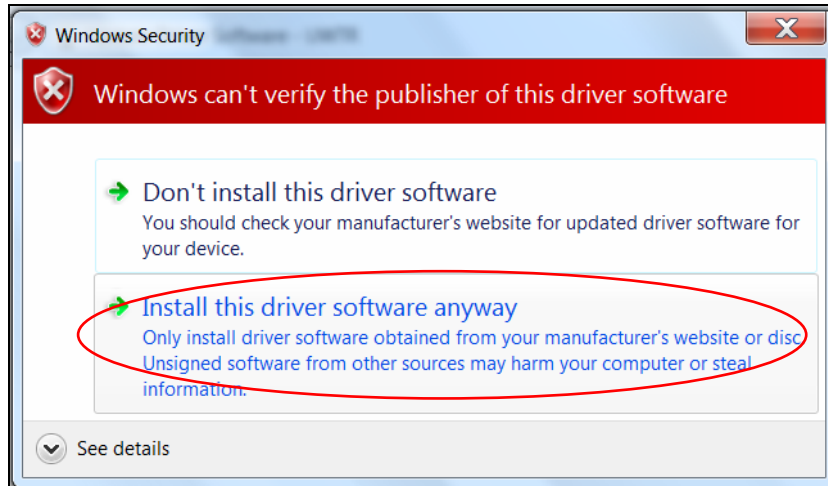


**Step 7:** Ignoring the content of combo box, directly click the **Browse** button to look for the new driver location (NOTE: The new driver is included in **driver** folder under UWriter directory). After clicking the driver, it will be shown in the combo box, then click the **NEXT** button.

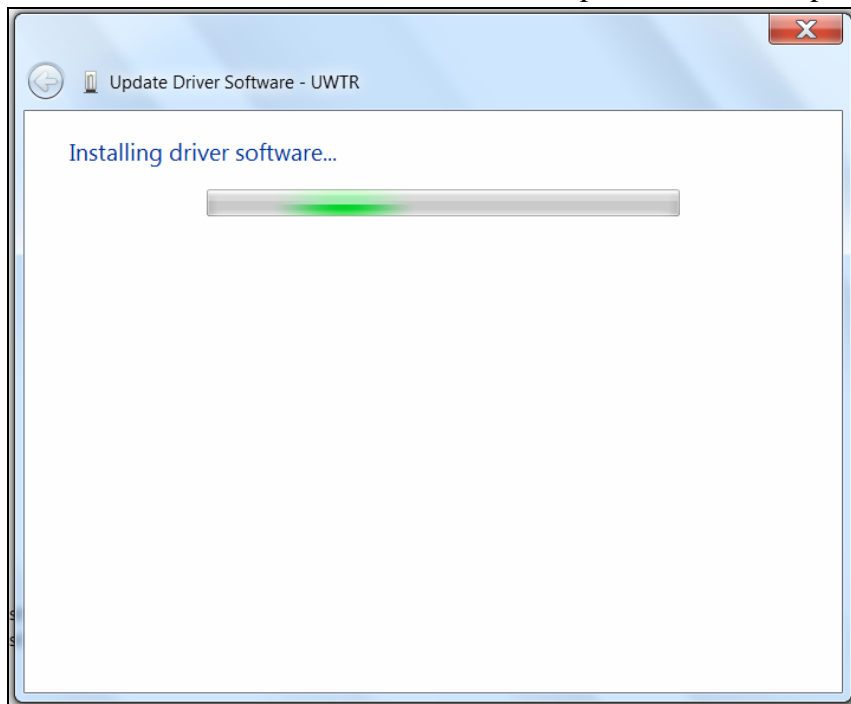




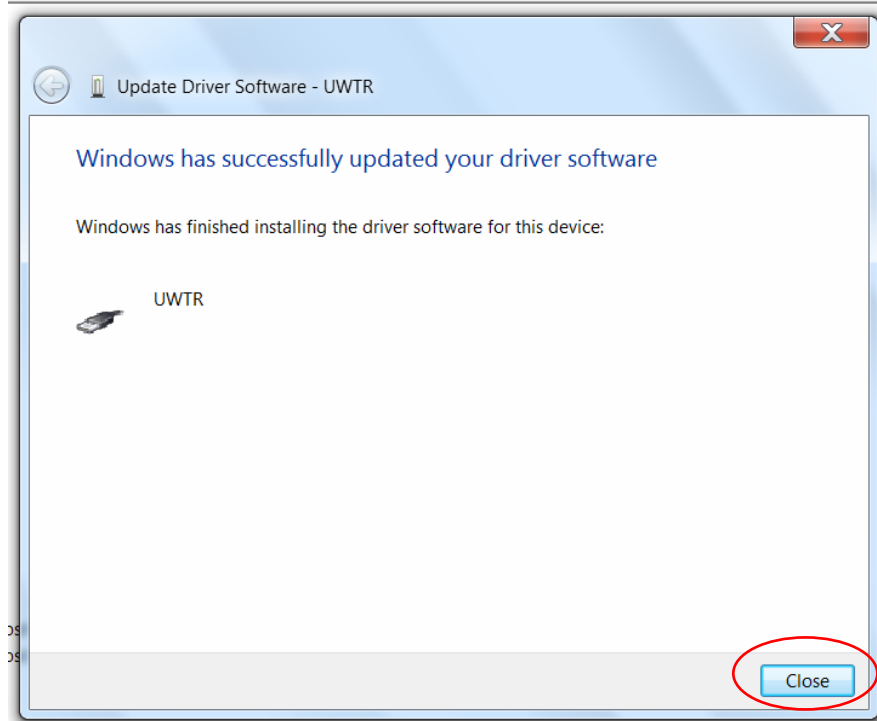
**Step 8:** From the resulting **Windows Security** dialog, select and click “**Install this driver software anyway**”.



**Step 9:** Driver software installation starts and wait for the process to be completed.



**Step 10:** When the driver software is successfully installed, the following dialog will display. Then click the **Close** button.



**Step 11:** After the “UWTR” driver is installed successfully, you can now start using UWriter.